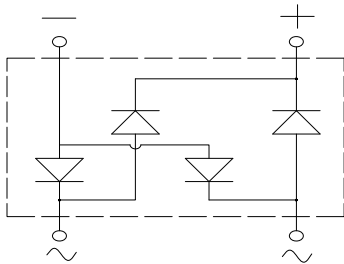


UL recognition, file #E313149
Glass passivated chip junction
Ideal for automated placement
High surge current capability
Meets MSL level 1, per J-STD-020, LF maximum peak of 260 °C

General purpose use in AC/DC bridge full wave rectification for SMPS, lighting ballaster, adapter, battery charger, home appliances, office equipment, and telecommunication applications.



: YBS3

Molding compound meets UL 94 V-0 flammability rating, RoHS-compliant, Halogen-free

: Tin plated leads, solderable per

J-STD-002 and JESD22-B102

As marked on body

($T_a=25^\circ\text{C}$ Unless otherwise specified)

Device marking code			RYBSM8010
Maximum Repetitive Peak Reverse Voltage	VRRM	V	1000
Maximum RMS Voltage	VRMS	V	700
Maximum DC blocking Voltage	VDC	V	1000
Average rectified output current @60Hz sine wave, R-load, $T_c=30$	I _O	A	8.0
Forward Surge Current (Non-repetitive) @60Hz Half-sine wave, 1 cycle, $T_j=25$	IFSM	A	200
Forward Surge Current (Non-repetitive) @1ms, square wave, 1 cycle, $T_j=25$			400
Current squared time @1ms $t \leq 8.3\text{ms}$ $T_j=25$, Rating of per diode	I ² t	A ² s	166
Storage temperature	T _{stg}		-55 ~ +150
Junction temperature	T _j		-55 ~ +150

($T_a=25^\circ\text{C}$ Unless otherwise specified)

Maximum reverse recovery time	t _r	ns	I _F =0.5A, I _R =1.0A, I _{rr} =0.25A	500
Maximum instantaneous forward voltage drop per diode	V _F	V	I _{FM} =4.0A	1.3
Maximum DC reverse current at rated DC blocking voltage per diode	I _R	μA	T _j =25	5
			T _j =125	100
Typical junction capacitance	C _j	pF	Measured at 1MHz and Applied Reverse Voltage of 4.0 V.D.C	68



($T_a=25^{\circ}\text{C}$ Unless otherwise specified)

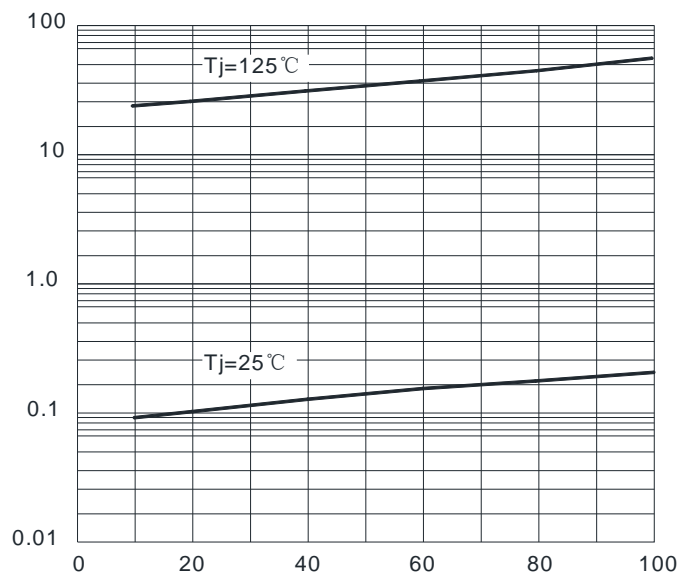
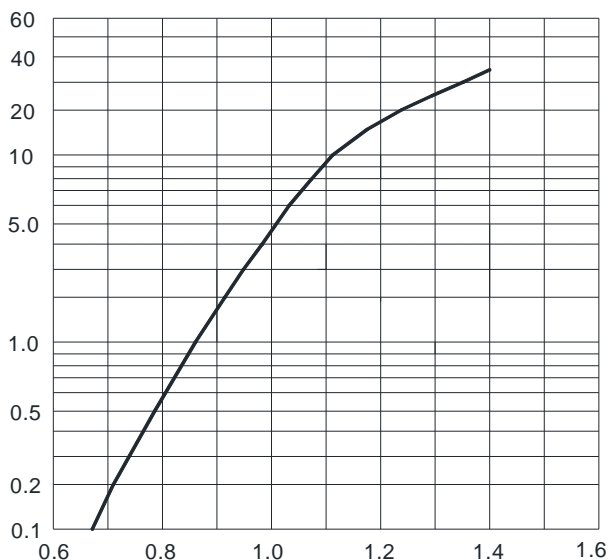
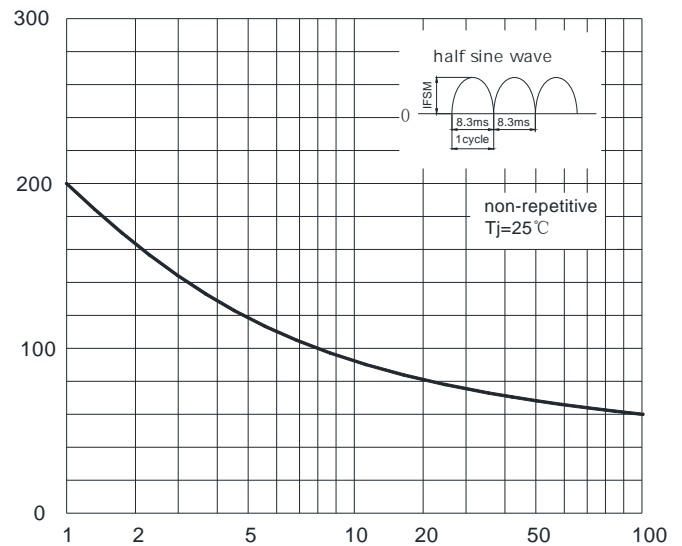
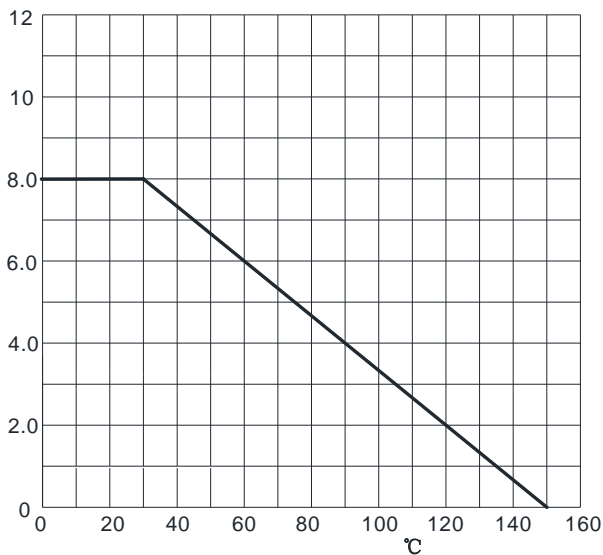
Typical Thermal Resistance	Between Junction and Ambient	R_{J-A}	/W	55
	Between Junction and Lead	R_{J-L}		14
	Between Junction and Case	R_{J-C}		8

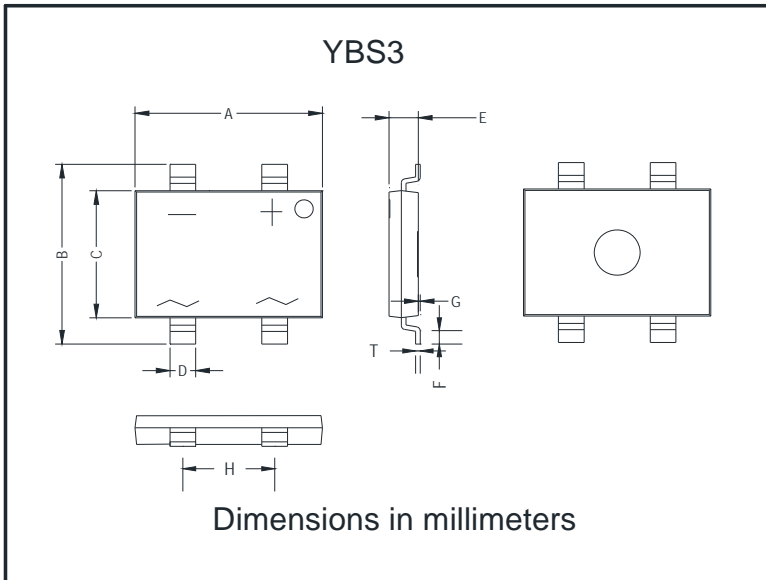
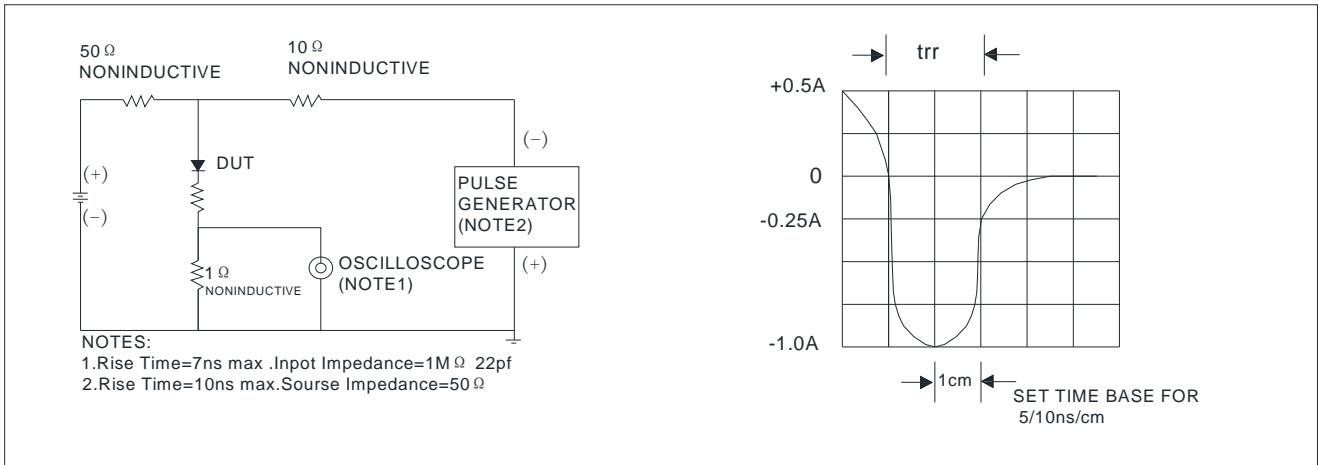
Note: Device mounted on P.C.B with 35mm*25mm*1.7mm.

(Example)

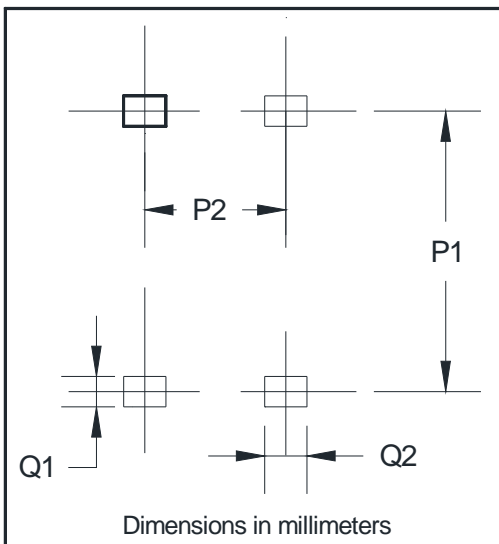
RYBSM8010	F1	Approximate 0.38	1800	3600	25200	13" Reel

(Typical)





A	10.00	10.40
B	9.70	10.10
C	6.80	7.20
D	1.3	1.5
E	1.4	1.8
F	0.5	1.1
G	0	0.15
H	4.9	5.1
T	0.20	0.30



P1	9.25
P2	5.00
Q1	1.00
Q2	1.5



The information presented in this document is for reference only. Yangzhou Yangjie Electronic Technology Co., Ltd. reserves the right to make changes without notice for the specification of the products displayed herein to improve reliability, function or design or otherwise.

The product listed herein is designed to be used with ordinary electronic equipment or devices, and not designed to be used with equipment or devices which require high level of reliability and the malfunction of which would directly endanger human life (such as medical instruments, transportation equipment, aerospace machinery, nuclear-reactor controllers, fuel controllers and other safety devices), Yangjie or anyone on its behalf, assumes no responsibility or liability for any damages resulting from such improper use of sale.

This publication supersedes & replaces all information previously supplied. For additional information, please visit our website [http:// www.frxelec.com](http://www.frxelec.com) , or consult your nearest Yangjie's sales office for further assistance.